

# IB Clad Drip Edge Metal

## Product Description:

IB Clad Drip Edge Metal is fabricated with a durable 45 mil non-reinforced IB PVC film with acrylic finish, laminated to 24 gauge, ASTM A653-09, CS Type B, G90 galvanized sheet metal. It is formed into a standard metal drip edge profile with an open-hem kick-out at the bottom to provide a corrosion resistant, heat weld-able perimeter roof edge termination for IB Roofing Systems.

## Sizes:

Standard sizes available in 2.5" and 4" drip edge  
Individual pieces made in 10' sections

## Packaging:

Sold per 10' section  
Available in 100 piece cardboard shipping tubes

## Features:

- Factory fabricated edge metal ready to install onsite
- Durable 45 mil IB PVC film with acrylic top finish
- Corrosion resistant, 24 gauge G90 galvanized sheet metal
- Open hem kick out
- Additional sizes and profiles available through custom order to your specifications

## Available Colors:

- Standard Clad Finish in White, Bronze, Tan, and Gray



- GR Glass Clad metal in Old World Bronze (non-acrylic finish) and Aluminum



- Also available in SAE 304 stainless steel (White only)

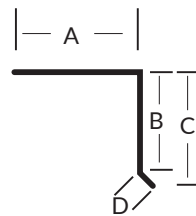
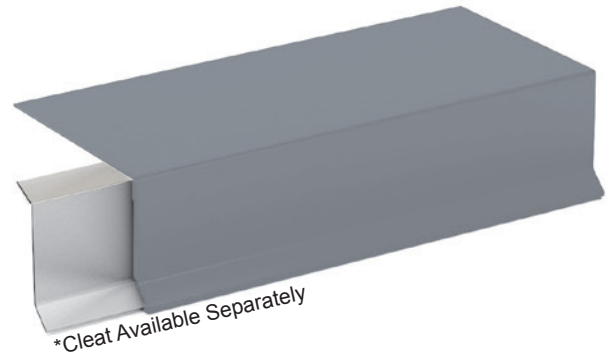


## Accessory Metal Cleat:

Factory fabricated 22 ga. ASTM G53-09, CS Type B, G90 galvanized steel cleats are sold separately and are custom manufactured for use with IB Clad Drip Edge Metal produced for installations requiring a continuous cleat. They are formed to profile with a 1/2" deck flange.

## Packaging:

Shipped in cardboard boxes



DRIP EDGE	2.5"	4"
A - Flange	3"	3"
B - Coverage	2"	3.5"
C - Face	2.5"	4"
D - Hem	.5"	.5"
<b>Length</b>	10'	10'
<b>Weight</b>	5.5lb	7.5lb

ANSI / SPRI ES-1 Tested Metals (Report #3195892MID-004)		
Product ID	Attachment	Maximum Design Pressure
2.5" Clad Drip Edge Metal* (G90 CS Steel)	Min #12 Roofing Fastener, min. 1" penetration attached 12" o.c.	-160 psf (320 lb./ft <sup>2</sup> )
4" Clad Drip Edge Metal (G90 CS Steel with 22 ga. Cleat)	Min #12 Roofing Fastener, min. 1" penetration attached 12" o.c.	-160 psf (320 lb./ft <sup>2</sup> )
Clad Edge Material: PVC Clad 0.022" thick G90 Galvanized Commercial Steel Continuous Cleat Material: 0.022 Min. ASTM A 653 CS-09, Prime Galv Cold Rolled Sheet G90/G90  Test results apply to measurement uncertainty of +/- 4 lbs. with a 95% confidence level using the square root of the sum of the squares method with the K factor of 2 already applied.		