

Technical Data Sheet: IB Snap Facing

Product Description: IB Snap Facing is a two part assembly with a raised rigid retainer/clip base plate and a raised decorative, snap on facing cover designed for terminating Single-Ply roofing systems at the perimeter edges, or for vertically terminating Single-Ply base flashing. The IB Snap Facing system comes standard with 24 ga. Kynar 500 coated galvanized steel decorative snap on facing and a 20 gauge galvanized steel retainer/clip base plate with 9/32" pre punched holes for fastening 12" on center in 10.0' standard lengths.

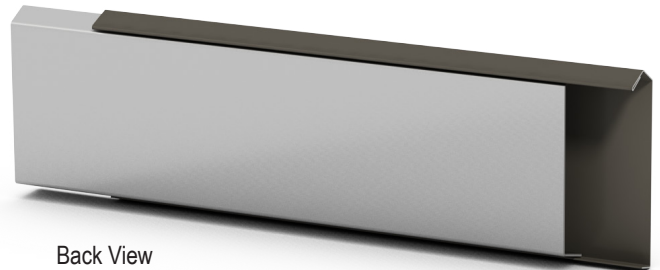
Advantages:

- Can be used as a edge termination like a edge, rake, or ridge metal can be used as a surface mounted counter flashing for vertical base flashing applications
- Design allows for a dual sealant termination by providing a continuous positive pressure compression of the roofing membrane to the underlying structure
- Optional Kynar 500 coated formed raised aluminum finishes and thickness' of .050-.063

Installation: Ensure that roofing membrane is continued up the side wall far enough to be covered by the raised rigid retainer/clip base plate. Position the raised rigid retainer/clip base plate as shown in the detail drawings. Attach using the mechanical fasteners (by installer). Locate fasteners in each pre-punched holes. Space each 10'-0" section by 1/8" (or 1/4" in cold weather) to allow for thermal expansion. Position the snap on facing cover as shown in the detail drawings (parallel to the raised rigid retainer/clip base plate). Hook the bottom of the snap on facing cover on the bottom lip of the raised rigid retainer/clip base plate and push the top of the snap on facing cover until it snaps it into position. Lap each adjoining piece of IB Snap Facing Assembly a min. of 1" to allow for thermal expansion. Stagger all fascia cover seams so that they do not align with raised rigid retainer/clip base plate seams. Apply a continuous (3/8") wide bead of sealant to the top side of the IB Snap Facing (see detail drawing). Field bevel cut raised rigid retainer/clip base plate and IB Snap Facing for appropriate corner.



Front View



Back View

