

Technical Data Sheet: IB Drip Edge Clad / Gravel Stop Metal

Drip Edge Clad Metal: Drip Edge Clad Metal consists of an ASTM A653-09, CS Type B Coating: G90 corrosion resistant galvanized coated sheet metal with a laminated 25 mil. smooth, non-reinforced PVC, formed into a metal profile to provide a clean, durable edge termination for IB Roofing Systems (*22 ga. G90 Galvanized Steel Continuous cleat required for larger face designs).

Gravel Stop Clad Metal: Edge Clad Metal consists of an ASTM A653-09, CS Type B Coating: G90 corrosion resistant galvanized coated sheet metal with a laminated 25 mil. smooth, non-reinforced PVC, formed into a high profile piece to provide a clean, durable edge termination for IB Roofing Systems (*22 ga. G90 Galvanized Steel Continuous cleat required for larger face designs).

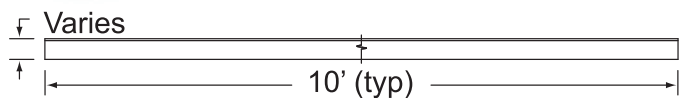
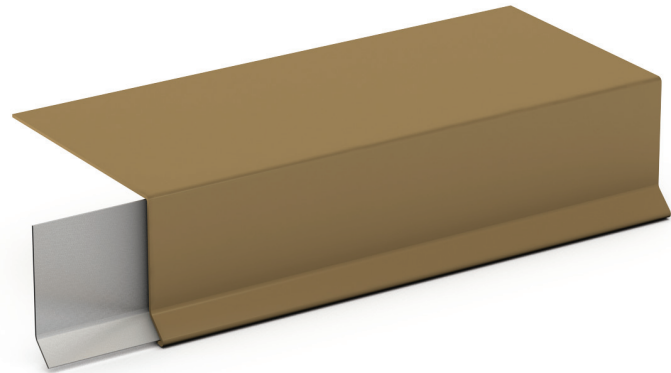
Available Colors: White and bronze. (Custom metal available in copper and stainless.)

ANSI/SPRI ES-1 Tested Metals (Report #3195892MID-004)		
Product ID	Attachment	Maximum Design Pressure
2" Clad Drip Edge Metal* (G90 CS Steel)	#12 Roofing Fastener, min. 1" penetration attached 12" o.c.	-160 psf (320 lb/ft ²)
3" Clad Drip Edge Metal (G90 CS Steel)	#12 Roofing Fastener, min. 1" penetration attached 12" o.c.	-160 psf (320 lb/ft ²)
4" Clad Drip Edge Metal (G90 CS Steel with 22 ga. Cleat)	#12 Roofing Fastener, min. 1" penetration attached 12" o.c.	-160 psf (320 lb/ft ²)
5" Clad Drip Edge Metal (G90 CS Steel with 22 ga. Cleat)	#12 Roofing Fastener, min. 1" penetration attached 12" o.c.	-160 psf (320 lb/ft ²)
2-3/4" Clad Gravel Stop Metal* (G90 CS Steel)	#12 Roofing Fastener, min. 1" penetration attached 12" o.c.	-150 psf (300 lb/ft ²)
3-3/4" Clad Gravel Stop Metal (G90 CS Steel)	#12 Roofing Fastener, min. 1" penetration attached 12" o.c.	-150 psf (300 lb/ft ²)
4-3/4" Clad Gravel Stop Metal (G90 CS Steel with 22 ga. Cleat)	#12 Roofing Fastener, min. 1" penetration attached 12" o.c.	-160 psf (320 lb/ft ²)
5-3/4" Clad Gravel Stop Metal (G90 CS Steel with 22 ga. Cleat)	#12 Roofing Fastener, min. 1" penetration attached 12" o.c.	-160 psf (320 lb/ft ²)

Clad Edge & Gravel Stop Cap Material: PVC Clad 0.022" thick G90 Galvanized Commercial Steel
 Continuous Cleat Material: 0.022 Min. ASTM A 653 CS-09, Prime Galv Cold Rolled Sheet G90/G90

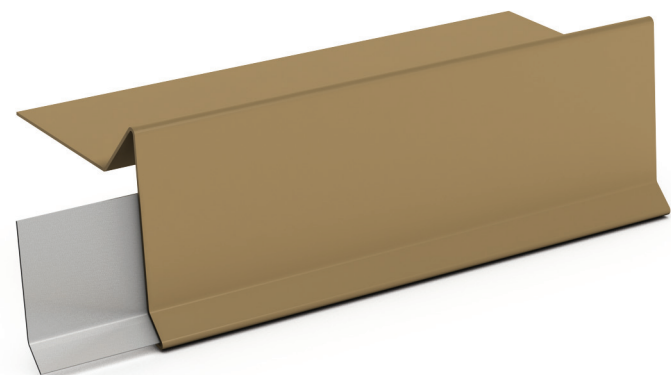
Test results apply to measurement uncertainty of +/- 4 lbs. with a 95% confidence level using the square root of the sum of the squares method with the K factor of 2 already applied.

IB Drip Edge Clad Metal



Edge Metal	2"	3"	4"	5"
Face	2"	3"	4"	5"
Hem	1/2"	1/2"	1/2"	1/2"
Flange	3"	3"	3"	3"
Length	10'	10'	10'	10'
Weight (lbs)	5	6	7	8

IB Gravel Stop Metal



Gravel Stop Metal	2"	3"	4"	5"
Face	2-3/4"	3-3/4"	4-3/4"	5-3/4"
Hem	1/2"	1/2"	1/2"	1/2"
Flange	3-1/2"	3-1/2"	3-1/2"	3-1/2"
Rise	3/4"	3/4"	3/4"	3/4"
Length	10'	10'	10'	10'
Weight (lbs)	7	8	8	9