

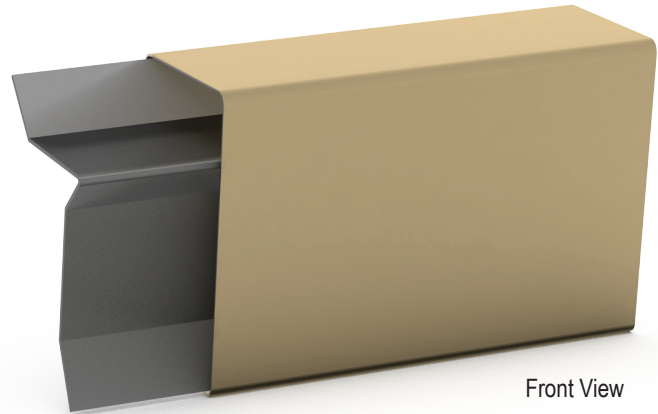
Technical Data Sheet: IB-155 Fascia

Product Description: IB-155 Fascia is a two part assembly with a rigid retainer/clip base plate and a decorative, snap on fascia cover designed for terminating Single-Ply roofing systems. The IB 155 fascia system comes standard with 24 ga. Kynar 500 coated galvanized steel decorative snap on fascia and a 20 galvanized steel retainer/clip base plate with 9/32" pre punched holes for fastening 12" on center in 10.0' standard lengths.

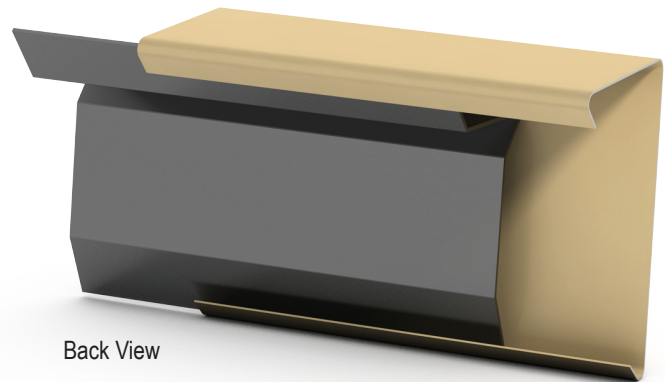
Advantages:

- Retainer base plate: clamps against the building like a termination bar and prevents wind / water from blowing under the roof membrane
- Simple two piece system: snap-on installation saves labor
- Variety of materials and finishes available: can meet needs of any finish or budget requirements
- Long-wearing finish and no oil canning of materials
- Standoff fascia directs drain off away from the walls and prevents water staining of the building walls
- No exposed fasteners: provides clean lines, low installation & labor cost
- Concealed splice plate: smooth unbroken appearance
- Factory fabricated corners and accessories available: maintains professional appearance and can provide material to complete the entire job with consistent looking material
- Performance tested and warranted: tested, certified, and approved to withstand peeling effects of strong winds
- F.M. windstorm approval rating up to F.M.-I-465
- Optional Kynar 500 coated formed aluminum finishes and thickness' of .032-.040-.050-.063
- Optional formed or extruded aluminum retainer/clip base plate
- Designed for raised perimeter edges only (water flows away, not over IB 155 Fascia)

Installation: Install the roofing membrane according to the roofing membrane manufacturer's instructions. The edge of the membrane should extend over the face of the building approximately 3" (76.2 mm) and be secured by the retainer section or as required by the membrane manufacturer. Before the retainer is installed, apply a continuous bead of the roof manufacturer's sealant to the bottom side of the retainer. Lap the retainer by 1" (325.4 mm) and do not fasten through the laps. Secure the retainer using provided 1-1/2" stainless steel fasteners. Locate the fasteners in the pre-punched holes as required. Unless otherwise specified, fasteners should be located every 12" (304.8 mm). Install concealed joint covers between each fascia section. Hook the joint cover from the top and allow it to hang down the face of the retainer. Do not hook on the drip. Install fascia by hooking the back flange over the top of the retainer. Snap the fascia on by pushing down firmly on the leading edge until bottom snaps over the drip edge of the retainer. Leave a 1/8" gap (1/4" in cold weather) for thermal movement. Coordinate with membrane manufacturer before starting installation.



Front View



Back View

Fascia Model	Face Height "A" Inches	Coverage "C" Inches	Number of Nailers Covered
IB-155/375	3.75"	2.5"	1
IB-155/525	5.25"	4"	2
IB-155/675	6.75"	5.5"	3

*Unless ordered otherwise, IB-155 comes standard with formed aluminum exterior retainer and interlocking aluminum fascia.

Approvals and Ratings: Product is UL Classified to meet ANSI/SPRI ES-1 Roof Edge Standard as required by the International Building Code (IBC). Contact IB Roof Systems for more details.

Warranty: 25 year, 155 mph wind warranty.

Available Colors: White is standard color. Call your local IB Sales Representative for colored product availability.