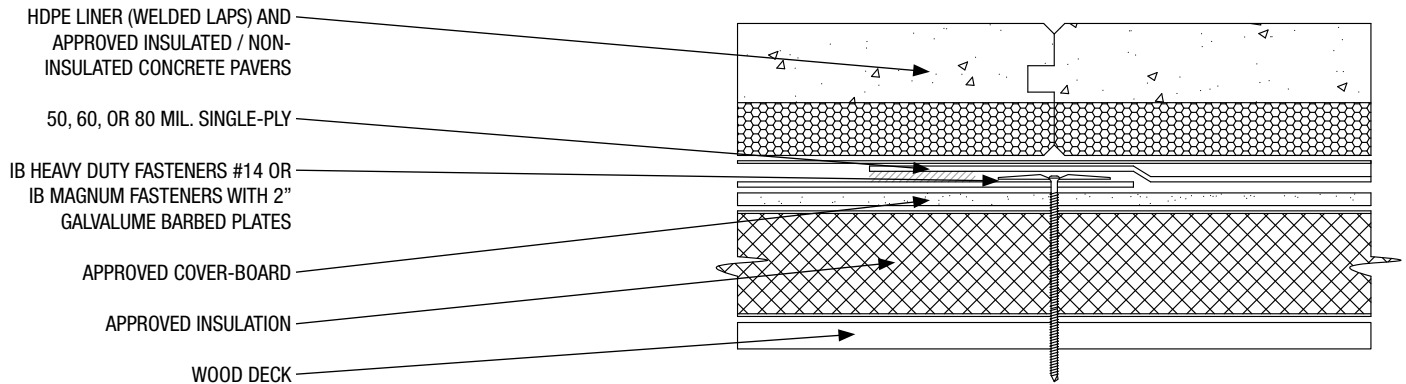


Project Name: _____ Contractor Name: _____



50 60 80 PV-MA-CB-RI-W (Wood) FastSpec™

Wood Deck – New Construction or Re-Roof (Tear-Off) – Fire Rated, MA Insulation, MA Membrane, and Pavers

Fire Rating	Deck Type	Insulation / Cover-Board		50, 60, or 80 mil. Single-Ply		Overburden	Max. Design Pressure**	
		Type	Attachment	Fasteners	Attachment			
<input type="checkbox"/>	Unlimited Slope, Class 'A'	Min. 1/2-inch plywood attached 6" o.c. with 8d common nails to supports spaced max. 24" o.c.	One or more layers, any combination of Insulation with Gypsum Cover-Board	Preliminarily attached (4 per 4 x 4) (8 per 4 x 8)	IB Heavy Duty Fasteners # 14 or IB Magnum Fasteners with 2" Galvalume Barbed Plates	Max. 12-in. o.c. in min. 5-in. side laps spaced max. 67 in. apart. Outside of seam sealed with min. 1.5 in heat weld.	HDPE Liner (welded laps) and Approved Insulated / Non-Insulated Concrete Pavers	-37.5 psf (1) (FM-I-75)
<input type="checkbox"/>	Unlimited Slope, Class 'A'	Min. 5/8-inch plywood attached 6" o.c. with 8d common nails to supports spaced max. 24" o.c.	One or more layers, any combination of Insulation with Gypsum Cover-Board	Preliminarily attached (4 per 4 x 4) (8 per 4 x 8)	IB Heavy Duty Fasteners # 14 or IB Magnum Fasteners with 2" Galvalume Barbed Plates	Max. 6-in. o.c. in min. 5-in. side laps spaced max. 67 in. apart. Outside of seam sealed with min. 1.5 in heat weld.	HDPE Liner (welded laps) and Approved Insulated / Non-Insulated Concrete Pavers	-45.0 psf (1) (FM-I-90)

The above assemblies and the attachments were tested and approved for use in the field of the roof. It is the designer of record and/or the roofing contractor's responsibility to determine the pressures for all three zones of the roof (field, perimeter, and corners per ASCE-7 05 and the building code) and through extrapolation, the lap spacing for the perimeter and corners zones. Contact IB Should you need assistance. The roofing system must be installed in strict accordance with the current 'IB Roof Systems Specifications Manual and Details', the project specifications, the building code, and good roofing practices by an authorized IB Applicator. Deviations from these requirements, not approved in writing by IB Roof Systems and the Authority Having Jurisdiction are not covered by any or implied IB Roof Systems Warranty.

Approved Insulations: IB ISO, II, III, and IV, R-Max Multi-Max, Hunter, Atlas ACFoam II, III, IV, JM 'NRG', Firestone, and GAFTemp Polyisocyanurate Tapered or Flat Stock, Premier Industries EPS, DOW XEPS, Tapered or Flat Stock, any thickness.

Approved Cover-Boards: Dens Deck, Dens Deck Prime, Dens Deck DuraGuard, Securock, minimum 1/4" thickness.

**** Minimum pull values on wood deck (per ANSI/SPRI FX 1-05): 350 lbs. (1) Does not constitute an FM system. For reference only.**

Solar Reflectance (White)	Initial: 0.87	3-Year Weathered: 0.74
Thermal Emittance	Initial: 0.88	3-Year Weathered: 0.90

Available Warranties

<input type="checkbox"/>	50 Mil Membrane	<input type="checkbox"/> CG	15-Year 'Material Only', Material and Labor, or No Dollar Limit (NDL). Additional warranties also available.
<input type="checkbox"/>	60 Mil Membrane	<input type="checkbox"/> TR	20-Year 'Material Only', Material and Labor, or No Dollar Limit (NDL). Additional warranties also available.
<input type="checkbox"/>	80 Mil Membrane	<input type="checkbox"/> CG	25-Year 'Material Only', Material and Labor, or No Dollar Limit (NDL). Additional warranties also available.

IB Roof Systems are listed with the following agencies:

