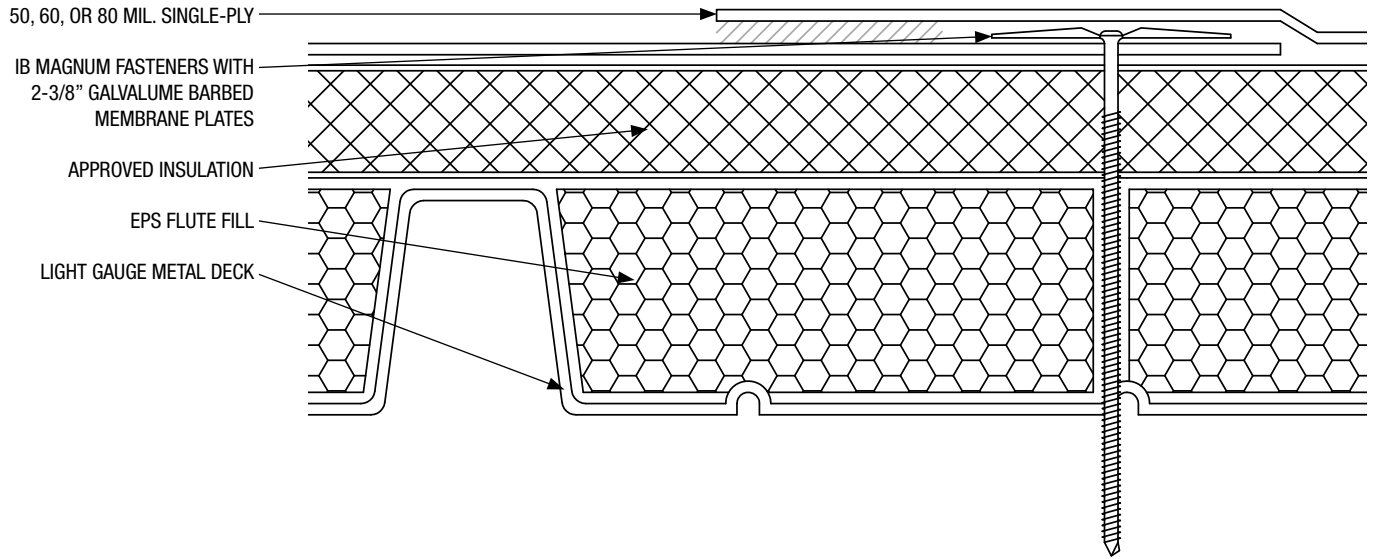


Project Name: _____ Contractor Name: _____



50 60 80 MA-RI-FF-LGS (Steel) FastSpec™

Steel Deck – New Construction or Re-Roof – Fire Rated, Mechanically Attached Insulation and Membrane							
Fire Rating	Deck Type	Insulation/Flute Fill		50, 60, or 80 mil. Single-Ply		Max. Design Pressure**	
		Type	Attachment	Fasteners	Attachment		
<input type="checkbox"/>	Min. 22 ga., Type B, Grade 33 steel	EPS fill in lower flutes. One or more layers of Polyisocyanurate Insulation.	Preliminary attached (4 per 4 x 4) (8 per 4 x 8)	IB Magnum Fasteners with 2-3/8" Galvalume Barbed Membrane Plates	Max. 6-in. o.c. in min. 5-in. side laps spaced max. 67 in. apart. Outside of seam sealed with min. 1.5 in heat weld.		
<p>Contact IB Should you need assistance. The roofing system must be installed in strict accordance with the current 'IB Roof Systems Specifications Manual and Details', the project specifications, the building code, and good roofing practices by an authorized IB Applicator. Deviations from these requirements, not approved in writing by IB Roof Systems and the Authority Having Jurisdiction are not covered by any or implied IB Roof Systems Warranty.</p> <p>Approved Insulations: IB ISO, II, III, and IV, R-Max Multi-Max, Hunter, Atlas ACFoam II, III, IV, JM 'NRG', Firestone, GAFTemp Polyisocyanurate Tapered or Flat Stock.</p> <p>** Minimum pull values on steel deck (per ANSI/SPRI FX 1-05): 300 lbs. (1) Does not constitute an FM system. For reference only.</p>							
Solar Reflectance (White)			Initial: 0.87		3-Year Weathered: 0.74		
Thermal Emittance			Initial: 0.88		3-Year Weathered: 0.90		
Available Warranties							
<input type="checkbox"/>	50 Mil Membrane	<input type="checkbox"/> CG	15-Year 'Material Only', Material and Labor, or No Dollar Limit (NDL). Additional warranties also available.				
<input type="checkbox"/>	60 Mil Membrane	<input type="checkbox"/> TR	20-Year 'Material Only', Material and Labor, or No Dollar Limit (NDL). Additional warranties also available.				
<input type="checkbox"/>	80 Mil Membrane	<input type="checkbox"/> CG	25-Year 'Material Only', Material and Labor, or No Dollar Limit (NDL). Additional warranties also available.				
IB Roof Systems are listed with the following agencies:							