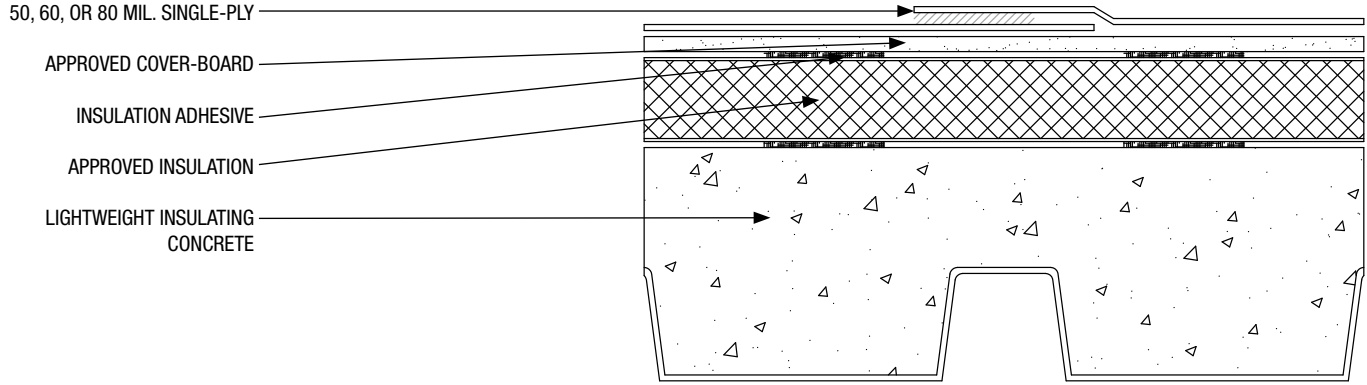


Project Name: _____ Contractor Name: _____



50 60 80 FASS-CB-RI-LWIC (Lightweight Concrete) *FastSpec*™

**Lightweight Insulating Concrete Deck – New Construction or Re-Roof (Tear-off)
Fire Rated, Bonded Insulation, Cover-Board, and Bonded Membrane**

Fire Rating	Deck Type	Insulation (Bonded to the Existing Roof)		50, 60, or 80 mil. Single-Ply	Max. Design Pressure**	
		Type	Attachment	Attachment		
<input type="checkbox"/>	Unlimited Class 'A'	Min. 3" thick lightweight insulating concrete over steel deck	One or more layers of Approved Insulation and Gypsum Cover-Board	Four continuous ribbons of OlyBond 500 or SpotShot™ Insulation Adhesive, min. 3/4" to 1 inches wide, 12" o.c. (evenly spaced)	Vertibond or Waterborne Adhesive applied at the nominal rate of 1 to 1.5 gallons per 100 sq. ft.	-150.0 psf ⁽¹⁾ (FM-I-300)
<input type="checkbox"/>	Unlimited Class 'A'	Min. 3" thick lightweight insulating concrete over steel deck	One or more layers of Approved Insulation and Gypsum Cover-Board	Four continuous ribbons of OlyBond 500 or SpotShot™ Insulation Adhesive, min. 3/4" to 1 inches wide, 12" o.c. (evenly spaced)	Vertibond or Waterborne Adhesive applied at the nominal rate of 1 to 1.5 gallons per 100 sq. ft.	-215.0 psf ⁽¹⁾ (FM-I-430)

The above assemblies and the attachments were tested and approved for use in the field of the roof. It is the designer of record and/or the roofing contractor's responsibility to determine the pressures for all three zones of the roof (field, perimeter, and corners per ASCE-7 05 and the building code) and through extrapolation, the lap spacing for the perimeter and corners zones. Contact IB Should you need assistance. The roofing system must be installed in strict accordance with the current 'IB Roof Systems Specifications Manual and Details', the project specifications, the building code, and good roofing practices by an authorized IB Applicator. Deviations from these requirements, not approved in writing by IB Roof Systems and the Authority Having Jurisdiction are not covered by any or implied IB Roof Systems Warranty.

Approved Insulations: IB ISO, II, III, and IV, R-Max Multi-Max, Hunter, Atlas ACFoam II, III, IV, JM 'NRG', Firestone, GAFTemp Polyisocyanurate Tapered or Flat Stock.

Approved Cover-Boards: Dens Deck, Dens Deck Prime, Dens Deck DuraGuard, Securock, minimum 1/4" thickness.

**** Tests are required to verify adhesive performance per ANSI/SPRI IA-05. (1) Does not constitute an FM system. For reference only.**

Solar Reflectance (White)	Initial: 0.87	3-Year Weathered: 0.74
Thermal Emittance	Initial: 0.88	3-Year Weathered: 0.90

Available Warranties

<input type="checkbox"/>	50 Mil Membrane	<input type="checkbox"/> CG	15-Year 'Material Only', Material and Labor, or No Dollar Limit (NDL). Additional warranties also available.
<input type="checkbox"/>	60 Mil Membrane	<input type="checkbox"/> TR	20-Year 'Material Only', Material and Labor, or No Dollar Limit (NDL). Additional warranties also available.
<input type="checkbox"/>	80 Mil Membrane	<input type="checkbox"/> CG	25-Year 'Material Only', Material and Labor, or No Dollar Limit (NDL). Additional warranties also available.

IB Roof Systems are listed with the following agencies:

