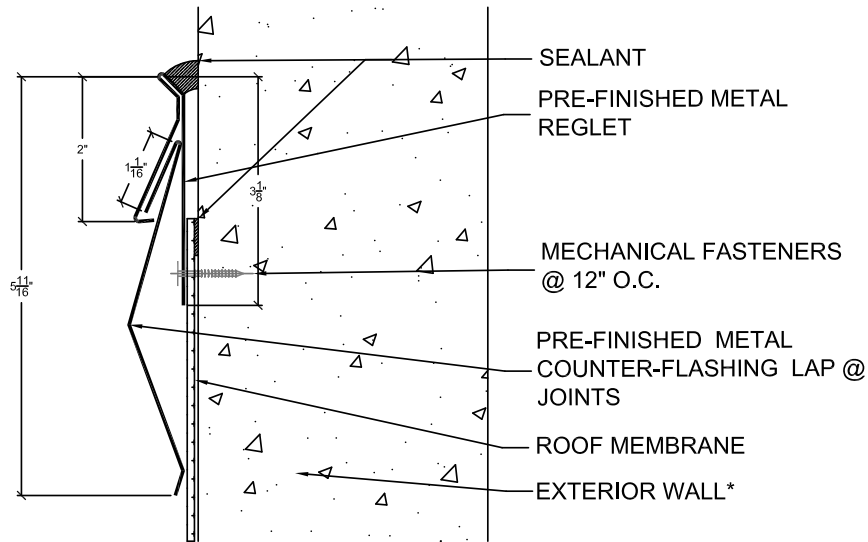
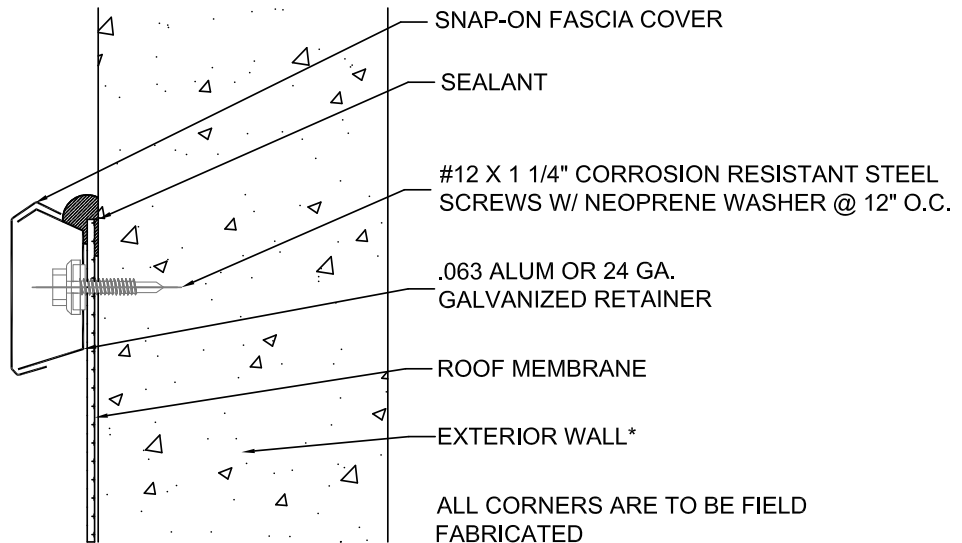


## WP HICKMAN COUNTER-FLASHINGS



### CONCEALED MOUNT COUNTER FLASHING



### SNAP-ON FACING COUNTER FLASHING

\* NOT TO BE USED OVER SIDING OR STUCCO FINISHED WALL SURFACES. CONCRETE WALLS WITH FINISH PAINT MUST BE SCRAPPED BARE AND FREE OF ALL CONTAMINANTS TO ALLOW FOR ADHESIVES TO SEAL TO THE CONCRETE SURFACE.

PROJECT NAME:

TITLE:

**MB-20 WP HICKMAN COUNTER FLASHINGS**

*\* Click here to link to the AutoCAD™ drawing*

SCALE: NTS

APPROVED BY:

DRAWN BY: A.SCHWAB

PLOT DATE: 11-08  
REV: AS 11-08