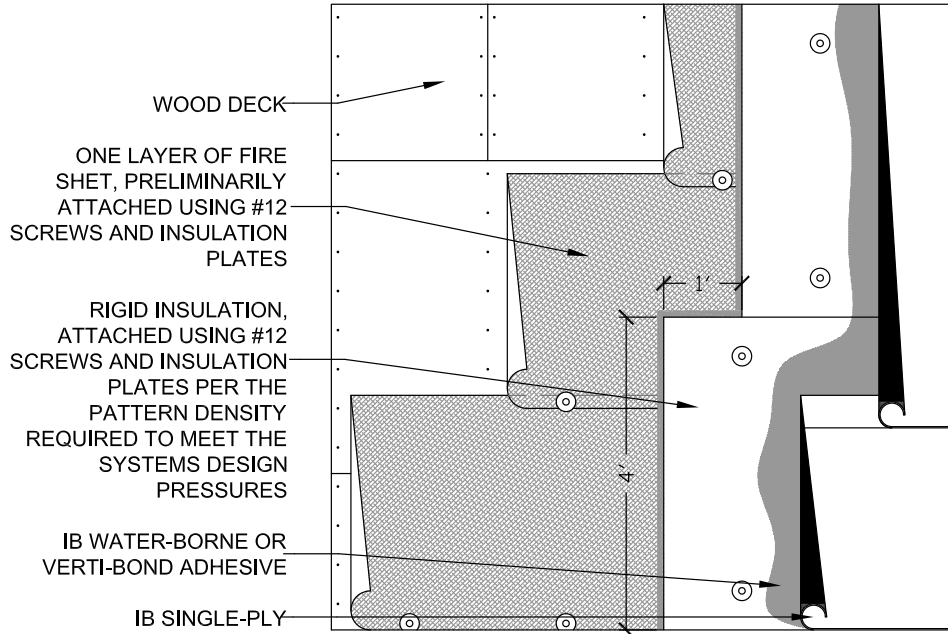


SINGLE LAYER OF FIRE SHEET



FIRE SHEET	SLOPE	FIRE RATING	LAYERS
Fire Sheet 10 or Fire Sheet 50	0-1/2"	Class 'A' or Class 'B'	1

NOTES:

1. FIRE SHEET IS TYPICALLY USED OVER COMBUSTIBLE ROOF DECKS (I.E. PLYWOOD/OSB/WOOD PLANK) IN COMBINATION WITH SINGLE PLY TO ACHIEVE EITHER A CLASS 'A' OR 'B' FIRE RATING. *SEE GRAPH FOR REQUIREMENTS.
2. FIRE RATINGS FOR IB ROOF SYSTEMS CAN BE FOUND ON THE UNDERWRITERS LABORATORY (UL) WEBSITE:WWW.UL.COM
3. FIRE SHEETS ARE TO BE ATTACHED TO THE ROOF DECK WITH #12 SCREWS AND INSULATION PLATES. FASTENER SPACING MAY VARY DEPENDING ON AHJ.

PROJECT NAME:

TITLE:

FA-2 SINGLE-LAYER OF FIRE SHEET

** Click here to link to the AutoCAD™ drawing*

SCALE: NTS

APPROVED BY:

DRAWN BY: A.SCHWAB

PLOT DATE:11-08
REV: AS 11-08